



COMPPAIR TECHNOLOGIES: HEALABLE & SUSTAINABLE COMPOSITE SOLUTIONS

Forum InnoClimat, Montreux 05.11.21

Inspired by nature, we build healable composites through innovation.

www.comppair.ch
contact@comppair.ch

© CompPair 2021/Confidential

COMPOSITES

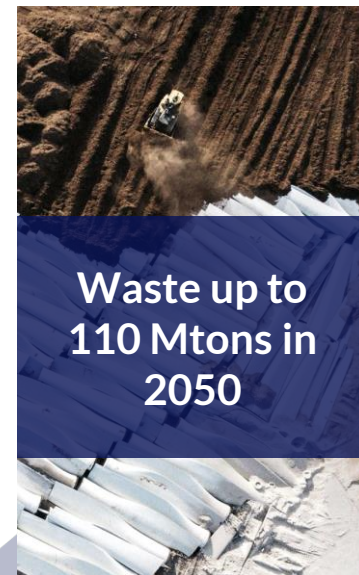
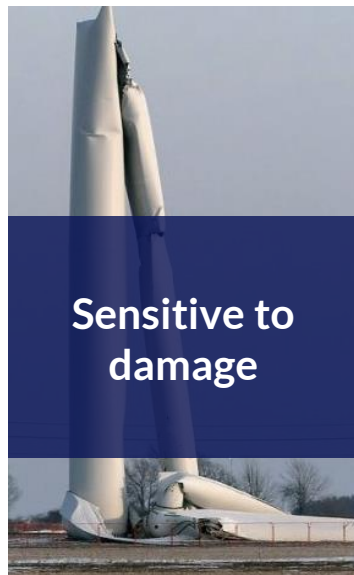
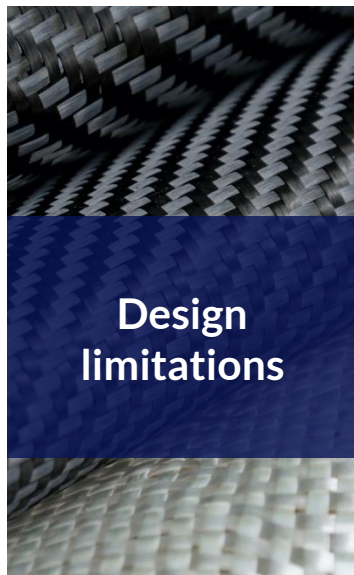
Materials with endless possibilities: glass, carbon & natural fibers



A 90 bn\$ industry with 5% CAGR!

PROBLEM

High repair costs and hard to recycle



Life-time management? Sustainability?

JEC Group Market data/ Polymer Composites Circularity, 2018. Photographer: Benjamin Rasmussen for Bloomberg Green

CompPair invented a new composite material able to repair itself and be better recycled

Inspired by nature, HealTech™ brings the healing capability of our flesh to composites: composites are now able to fully heal matrix damage in 1 minute.

Our technology acts during the whole lifetime of products, helping clients, consumers, and the planet.

HealTech™ is the result of 12 years of research in self-healing composite and is compatible with current prepreg production processes. HealTech™ helps manufacturers to reduce cost, increase reliability, and reduce their carbon footprint.



HEALTECH PRODUCTS

The first family in the portfolio: HealTech™

Carbon, Glass fiber preregs
Benchmark process (140°C, 3h)



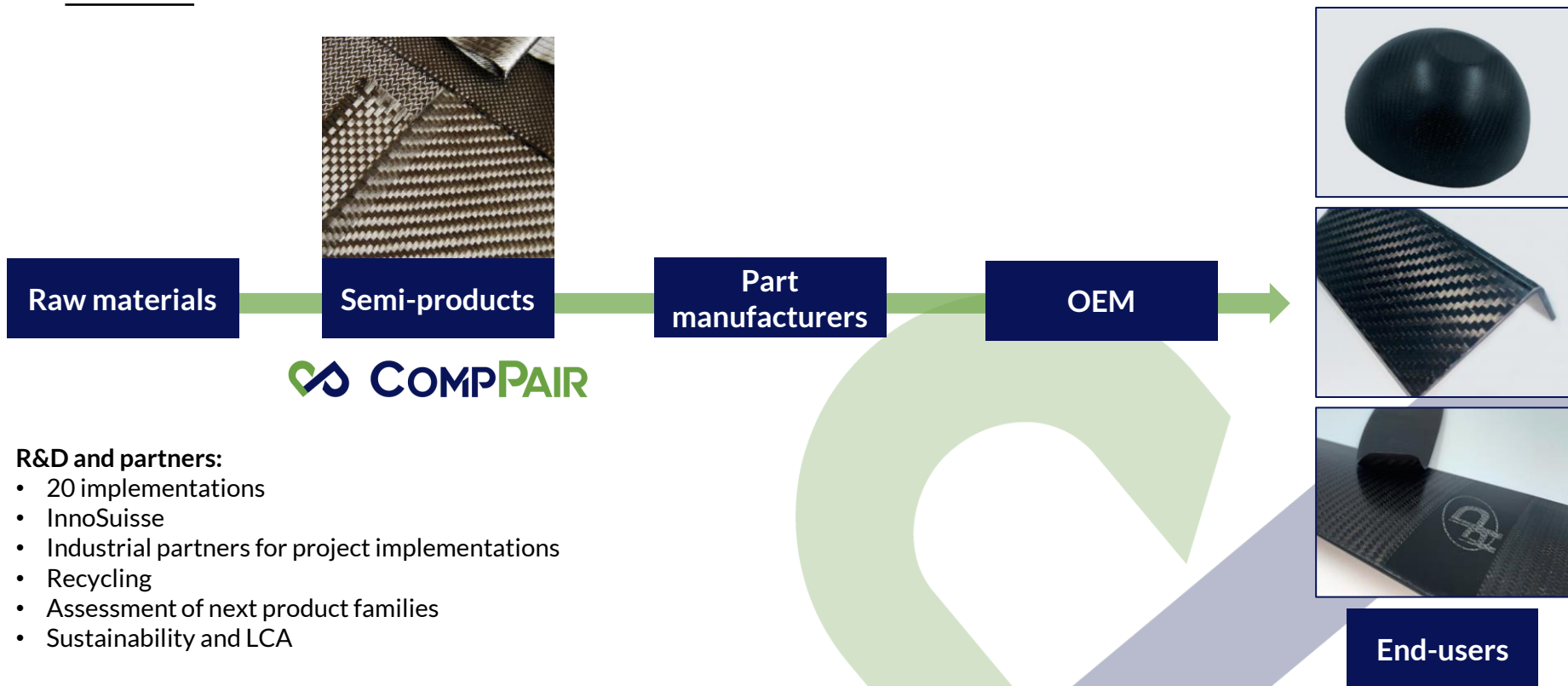
Various products for various applications



HealTech™ shipping now!

BUSINESS MODEL & CURRENT STATUS

Selling smart preimpregnated textiles for any composites' geometry



APPLICATIONS

A roadmap to the future



2020

2024

2027

2029

Marine & Sports

Windmill

Aerospace

Automotive

ACHIEVEMENTS

Currently working with 15 clients and pushing market entry

RESEARCH

Background research
Breakthrough
Scientific evidence

OPPORTUNITY

Patent
Market studies
First grants

SPIN-OFF

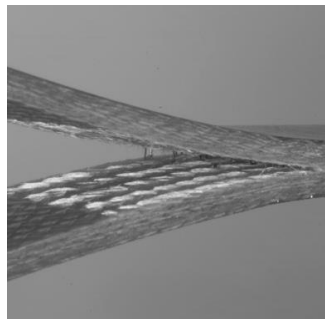
POCs
Validation
Market interest

INDUSTRIALIZATION

Product upscale validation
Team development
Traction from initial customers
First revenue pre-sales

MARKET ENTRY

20 client implementations
B2B2C strategy
Seed round closed
Team growth



2014 - 2018



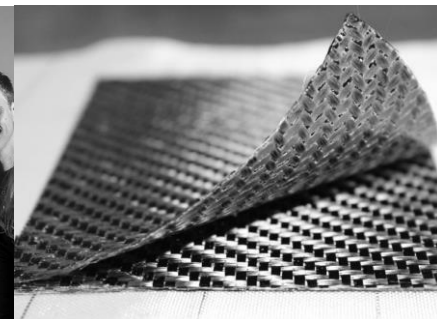
2018



2019



2020



2021



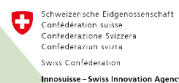
EPFL



EPFL INNOGRANTS

WISSENSCHAFT.
BEWEGEN
GEBERT ROF STIFTUNG

**VENTURE
KICK**



Non-dilutive funding to spin-off!

ENVIRONMENTAL IMPACT IN 10 YEARS

Acting on all value chain levels

Millions of SQM products sold



Recycling channels in place



Use of greener components



Mtons of CO₂ saved thanks to
life-time extension*

Reducing the production impact

Bio-based resins and natural fibre
materials

**Generated from preliminary calculation and internal data at CompPair*

© CompPair 2021/Confidential

MEET THE COMPPAIR TEAM

15 collaborators working to build better products, that last longer, and produce less waste

Board of Directors



Amaël
CEO



Robin
CTO



Véronique
SCIENTIFIC ADVISOR



Marie Ivorra Grosse
PRESIDENT OF BOARD



Nicolas
BUSINESS DEV. DIRECTOR



Emilie
MARKETING MANAGER



Cecilia
TECHNOLOGY MANAGER



Paul
OPERATIONS AND TECH.
SUPPORT LEAD



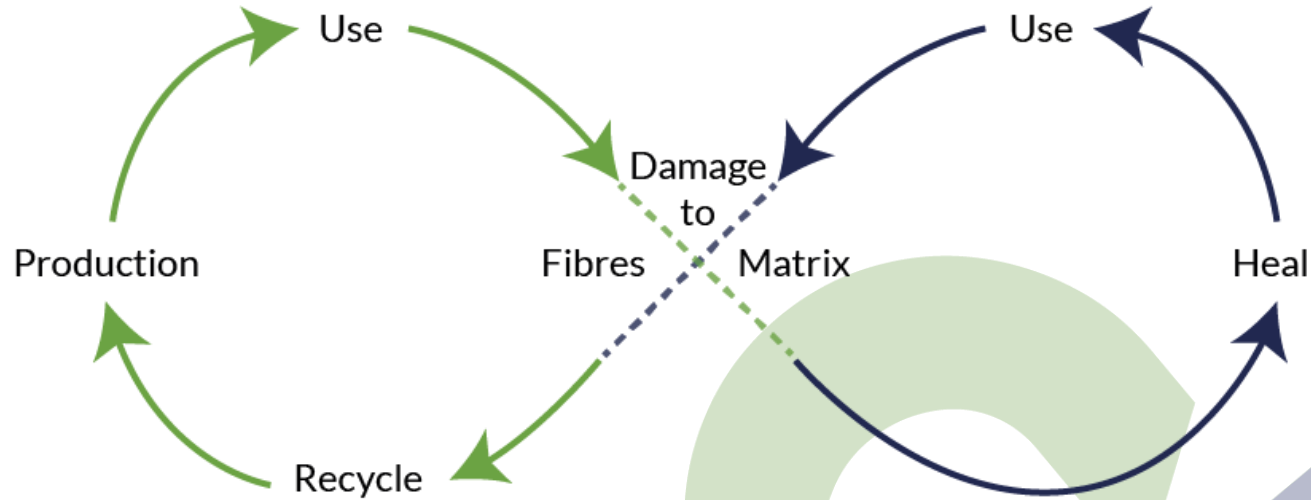
Christian Fischer
BOARD MEMBER



Thomas Rauber
BOARD MEMBER

OUR VISION

Provide full circularity to the composites industry



Potential 50% resources saved



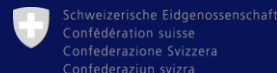


www.comppair.ch
contact@comppair.ch

JOIN US ON THIS IMPACTFUL JOURNEY!



Service de la promotion
de l'économie et de
l'innovation (SPEI)



Inspired by nature, we build healable composites through innovation.